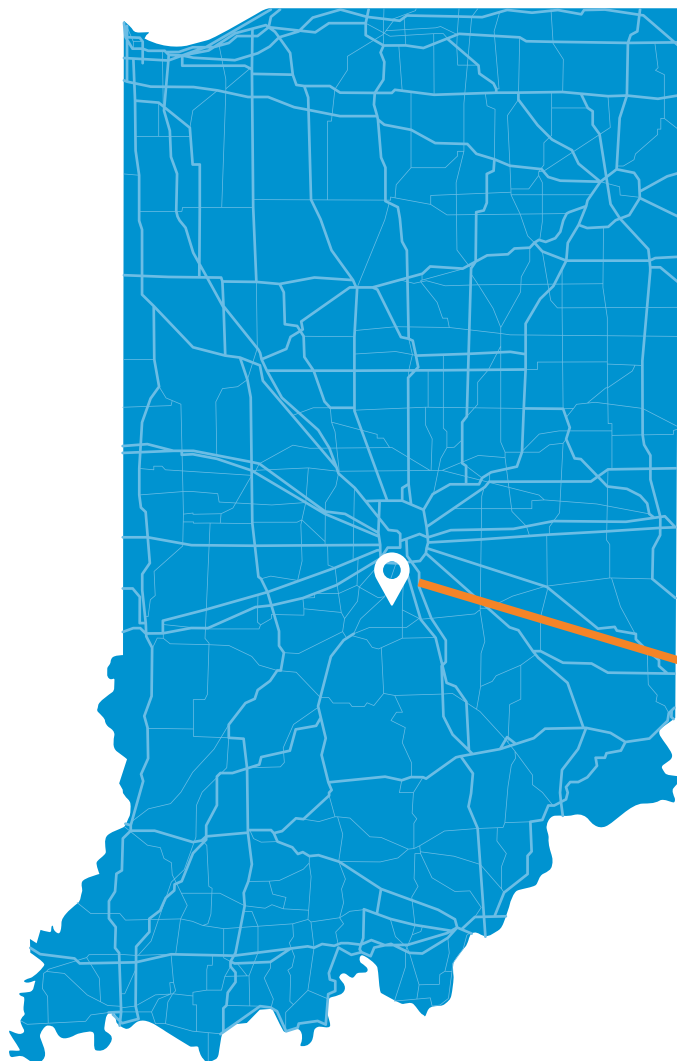




PRODUCT CATALOG





**LOCALLY
OWNED
TO BEST
SERVE
YOU**

**Reve Porter Custom
Sheet Metal**

5861 N 75 W Whiteland, IN 46184
www.reveporter.com
317-535-1111

© 2025 Reve Porter. All rights reserved.

No part of this catalog may be reproduced, stored in a retrieval system, or transmitted in any form or by any means—electronic, mechanical, photocopying, recording, or otherwise—without the prior written permission of Reve Porter. Product specifications and availability are subject to change without notice.

TABLE OF CONTENTS

01 | About Us

02 | Duct Work & Custom Fittings

03 | Furnace Filter Box

05 | Air Handler Filter Box

07 | Filter Media Cabinet

08 | Furnace Lift Box - Furnace Support Box

09 | Coil Riser Box

10 | Coil Riser Transition

10 | Filter Box Transition

11 | Cased Coil Box

12 | Adjustable Riser Box

13 | Adjustable Furnace Filter Box

14 | Adjustable Air Handler Box

15 | Core Values

ABOUT US

Located in Whiteland, Indiana, Reve Porter is a custom sheet metal shop with over 40 years of expertise in the HVAC industry. Serving the greater Indianapolis area, we take pride in delivering top-notch craftsmanship to our contractors and distributors. Our mission is to continue delivering high-quality products with excellence.

OUR LEADERSHIP TEAM



Charles Holden
CEO



Jordan Holden
Operations Director

DUCT WORK & CUSTOM FITTINGS



We specialize in custom sheet metal fabrication tailored to meet the unique needs of the HVAC industry. From made-to-order ductwork to custom fittings and drain pans, we deliver high-quality, custom solutions. Our skilled team works closely with decision-makers to ensure each piece is designed and fabricated to exact specifications. Whether it's a single custom component or a large-scale order, we pride ourselves on providing reliable, efficient service for every project.

Contact us for a quote today at orders@reveporter.com

FURNACE FILTER BOX

The Furnace Filter Box (FFB) is made to fit under a standard-width furnace and includes a filter slot with a user-friendly door. Boxes are made “filter depth” and will fit the opening underneath any standard furnace. Our design provides a near-perfect air seal in all the seams to ensure the greatest efficiency with your filter. The integrated thumb screw closure provides easy access for customers while preventing airflow from entering around the edge.

FEATURES & BENEFITS

- All boxes are designed to create a tight filter fit to improve air quality.
- A user-friendly “hinged” filter door configuration makes filter changes easy.
- Thumbscrew closure and air sealing ensure no air leaks past the door.
- All the metal is folded so that no sharp edges are exposed to the customer.
- All filter racks are designed to fit specific filter manufacturers with a variety of options.
- Top seams are riveted for support and stability.
- Small Pittsburgh seams ensure no air leakage around box perimeter.
- Finger hole allows for easy removal of filter.



STANDARD

Width	Height	Filter Size	Model Number
A Cabinet	18"	14x25x4	FFB-AS118-F0
A Cabinet	22"	14x25x4	FFB-AS122-F0
B Cabinet	18"	16x25x4	FFB-BS318-F0
B Cabinet	22"	16x25x4	FFB-BS322-F0
C Cabinet	18"	20x25x4	FFB-CS518-F0
C Cabinet	22"	20x25x4	FFB-CS522-F0
D Cabinet	18"	24x24x4	FFB-DS618-F0
D Cabinet	22"	24x24x4	FFB-DS622-F0

AIRBEAR

Width	Height	Filter Size	Model Number
B Cabinet	18"	16x25	FFB-BA318-F0
B Cabinet	22"	16x25	FFB-BA322-F0
C Cabinet	18"	20x25	FFB-CA518-F0
C Cabinet	22"	20x25	FFB-CA522-F0
C Cabinet	24"	20x25	FFB-CA524-F0
D Cabinet	22"	20x25	FFB-DA522-F0
D Cabinet	24"	20x25	FFB-DA524-F0

HONEYWELL

Width	Height	Filter Size	Model Number
B Cabinet	18"	16x25	FFB-BH318-F0
B Cabinet	22"	16x25	FFB-BH322-F0
C Cabinet	18"	20x25	FFB-CH518-F0
C Cabinet	22"	20x25	FFB-CH522-F0

AIR HANDLER FILTER BOX

Reve Porter Air Handler Filter Boxes (HFB) have all the features and benefits of the FFB but are designed to be the same depth as the air handler, so no transition is needed. All boxes include a filter slot and a user-friendly door.

FEATURES & BENEFITS

- Top seams are riveted for support and stability.
- All boxes are designed to create a tight filter fit to improve air quality.
- A user-friendly “hinged” filter door configuration makes filter changes easy.
- Thumbscrew closure and air sealing ensure no air leaks past the door.
- All the metal is folded so that no sharp edges are exposed to the customer.
- All filter racks are designed to fit specific filter manufacturers with a variety of options.
- Small Pittsburgh seams ensure no air leakage around box perimeter.
- Finger hole allows for easy removal of filter.



STANDARD

Width	Height	Filter Size	Model Number
B Cabinet	20"	16x20x4	HFB-BS220-F0
B Cabinet	22"	16x20x4	HFB-BS222-F0
C Cabinet	18"	20x20x4	HFB-CS418-F0
C Cabinet	22"	20x20x4	HFB-CS422-F0
D Cabinet	18"	20x25x4	HFB-DS518-F0
D Cabinet	22"	20x25x4	HFB-DS522-F0

AIRBEAR

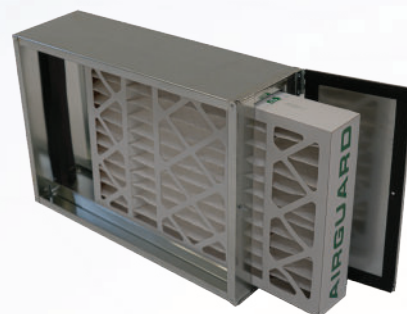
Width	Height	Filter Size	Model Number
18 ½" Cabinet	22"	16x25	HFB-EA322-F0
23 ½" Cabinet	22"	20x25	HFB-FA522-F0

HONEYWELL

Width	Height	Filter Size	Model Number
B Cabinet	18"	16x20	HFB-BH218-F0
B Cabinet	22"	16x20	HFB-BH222-F0
C Cabinet	18"	20x20	HFB-CH418-F0
C Cabinet	22"	20x20	HFB-CH422-F0

FILTER MEDIA CABINET

The Filter Media Cabinet (FMC) is just for applications that have space constraints and can be used with a return drop or installed over a floor return plenum. Filter depth is standard (nominal 25"). FMC boxes come in two models that will fit 1" 2" or 4" filters. The 4" tall box can house a 1" or 2" filter while the 8" tall box fits a standard 4" filter. Options include front load or side load. The front load has the filter door on the short side of the box and side load models have the door on the long side of the box.



4" TALL WITH 1" OR 2" FILTER

Width	Height	Filter Size	Model Number
A Cabinet	4"	14x25x2	FMC-AT104-F0
A Cabinet	4"	14x25x2	FMC-AT104-S0
B Cabinet	4"	16x25x2	FMC-BT304-F0
B Cabinet	4"	16x25x2	FMC-BT304-S0
C Cabinet	4"	20x25x2	FMC-CT504-F0
C Cabinet	4"	20x25x2	FMC-CT504-S0
D Cabinet	4"	24x24x2	FMC-DT604-X0

8" TALL WITH 4" FILTER

Width	Height	Filter Size	Model Number
A Cabinet	8"	14x25x4	FMC-AS108-F0
A Cabinet	8"	14x25x4	FMC-AS108-S0
B Cabinet	8"	16x25x4	FMC-BS308-F0
B Cabinet	8"	16x25x4	FMC-BS308-S0
C Cabinet	8"	20x25x4	FMC-CS508-F0
C Cabinet	8"	20x25x4	FMC-CS508-S0
D Cabinet	8"	24x24x4	FMC-DS622-X0

FURNACE LIFT BOX - FURNACE SUPPORT BOX

Reve Porter Furnace Lift Boxes (FLB) are designed to fit under a standard-width furnace in upflow applications to allow for more return air or to raise the furnace. The box depth is 25", measured front to back, and comes in several width and height options.

Our Furnace Support Box (FSB) is 28" deep to allow the entire furnace to sit on the box with no overhang.

Custom sizes are also available.



FURNACE LIFT BOX		
Width	Height	Model Number
A Cabinet	5"	FLB-A0005-00
A Cabinet	6"	FLB-A0006-00
B Cabinet	5"	FLB-B0005-00
B Cabinet	6"	FLB-B0006-00
C Cabinet	5"	FLB-C0005-00
C Cabinet	6"	FLB-C0006-00
D Cabinet	5"	FLB-D0005-00
D Cabinet	6"	FLB-D0006-00

FURNACE SUPPORT BOX		
Width	Height	Model Number
A Cabinet	5"	FSB-A0005-00
A Cabinet	6"	FSB-A0006-00
B Cabinet	5"	FSB-B0005-00
B Cabinet	6"	FSB-B0006-00
C Cabinet	5"	FSB-C0005-00
C Cabinet	6"	FSB-C0006-00
D Cabinet	5"	FSB-D0005-00
D Cabinet	6"	FSB-D0006-00

COIL RISER BOX

Reve Porter Coil Riser Boxes (CRB) are made to fit under a standard-width coil in downflow applications; however, they can also be used in many other applications. The box depth is 21 ¼" measured front to back. Boxes are available with or without insulation.

Custom sizes are also available.



COIL RISER BOX		
Width	Height	Model Number
A Cabinet	6"	CRB-A0006-05
A Cabinet	10"	CRB-A0010-05
B Cabinet	2"	CRB-B0002-00
B Cabinet	3"	CRB-B0003-00
B Cabinet	6"	CRB-B0006-05
B Cabinet	7"	CRB-B0007-05
B Cabinet	10"	CRB-B0010-05
B Cabinet	12"	CRB-B0012-05
C Cabinet	2"	CRB-C0002-00
C Cabinet	3"	CRB-C0003-00
C Cabinet	6"	CRB-C0006-05
C Cabinet	7"	CRB-C0007-05
C Cabinet	10"	CRB-C0010-05
C Cabinet	12"	CRB-C0012-05
D Cabinet	2"	CRB-D0002-00
D Cabinet	3"	CRB-D0003-00
D Cabinet	6"	CRB-D0006-05
D Cabinet	7"	CRB-D0007-05
D Cabinet	10"	CRB-D0010-05
D Cabinet	12"	CRB-D0012-05

COIL RISER TRANSITION

Reve Porter CRB transition boxes are designed to transition between two different cabinet sizes of a furnace and coil and maintain good airflow. They are centered or flat on 3 sides so the coil will sit balanced on the furnace. They measure 20 ½" front to back.



COIL RISER TRANSITION			
Transition	Height	Orientation	Model Number
A to B (14"-17 ½")	3"	Downflow	CRB-B0003-D0
A to B (14"-17 ½")	6"	Flat on one side	CRB-B0006-Y0
B to C (17 ½"-21")	3"	Downflow	CRB-C0003-D0
B to C (17 ½"-21")	6"	Flat on one side	CRB-C0006-Y0
C to D (21"-24 ½")	3"	Downflow	CRB-D0003-D0
C to D (21"-24 ½")	6"	Flat on one side	CRB-D0006-Y0

FILTER BOX TRANSITION

Reve Porter Filter Box Transitions (FBT) allow an air handler to be set on a furnace filter box. They are flat on the back and are 3" tall. This allows for a larger filter like a 16x25 or 20x25 to be used with an air handler with a 20" depth.



FILTER BOX TRANSITION	
Width	Model Number
A Cabinet	FBT-A0003-00
B Cabinet	FBT-B0003-00
C Cabinet	FBT-C0003-00
D Cabinet	FBT-D0003-00

CASED COIL BOX

Reve Porter Cased Coil Boxes (CBX) are designed to fit under a standard-width furnace in downflow applications and hold an uncased evaporator coil. The box depth is 20 ½" and the height is 28". All downflow boxes are insulated with ½" fiberglass insulation. These boxes have a door panel screwed onto the front and a removable bottom panel inside the box.



CASED COIL BOX		
Cabinet	Height	Model Number
A Cabinet	28"	CBX-A0028-05
B Cabinet	28"	CBX-B0028-05
C Cabinet	28"	CBX-C0028-05
D Cabinet	28"	CBX-D0028-05

ADJUSTABLE RISER BOX

Reve Porter Adjustable Riser Boxes (ARB) are made to fit under a standard-width air handler. The box depth is 20 ½" measured front to back. These boxes feature a bottom panel that is removable allowing the box to be cut to a shorter height in the field. Insulated (½" fiberglass) is standard, non-insulated is also an option.



ADJUSTABLE RISER BOX		
Width	Height	Model Number
B Cabinet	16"	ARB-B0016-05
C Cabinet	16"	ARB-C0016-05
18 ½" Cabinet	16"	ARB-E0016-05
23 ½" Cabinet	16"	ARB-F0016-05

ADJUSTABLE FURNACE FILTER BOX

All the internals are the same as the FFB and “filter depth,” however this box comes with a removable bottom so the height can be modified in the field.



ADJUSTABLE FURNACE FILTER BOX

Width	Height	Filter Size	Model Number
A Cabinet	20"	14x25x4	AFB-AS120-F0
B Cabinet	20"	16x25x4	AFB-BS320-F0
C Cabinet	20"	20x25x4	AFB-CS520-F0
D Cabinet	20"	24x24x4	AFB-DS620-F0

ADJUSTABLE AIR HANDLER BOX

The Adjustable Air Handler Box (AHB) is made with all the benefits and features of the Adjustable Furnace Filter Box (AFB) but the depth is designed to fit a standard air handler.



ADJUSTABLE AIR HANDLER BOX			
Width	Height	Filter Size	Model Number
B Cabinet	20"	16x20x4	AHB-BS220-F0
18 ½" Cabinet	20"	16x20x4	AHB-ES220-F0
C Cabinet	20"	20x20x4	AHB-CS420-F0
D Cabinet	20"	20x20x4	AHB-DS420-F0
23 ½" Cabinet	20"	20x20x4	AHB-FS420-F0

CORE VALUES

SERVICE

Customer satisfaction is priority one.

Another way of expressing this idea is by engaging in Servant Leadership. It means that we will put customers' needs ahead of our own. We strive to serve our customers sacrificially so that they benefit from our work.

We value all customers. It is our goal to treat all customers as if their needs are the most important thing to us.

We do not become angry or disrespectful even when faced with tough situations.

A smile and a great attitude are the best way to start a conversation. We let people know that we care.

EXCELLENCE

A world-class organization is our aim.

We want to be known as the best in our field. And we endeavor to do everything so that the organization runs smoothly and efficiently.

We expect every person within the organization to do their daily work as if that person will be held accountable for the work that they did.

We are committed to continually investing in skill development for our employees so that they can produce better products and services. We understand that every person has value, and we train and develop our employees to increase that value.

We are committed to adapting to a changing marketplace without compromising our Core Values.

INTEGRITY

We will not compromise.

We will do what is right, even when no one is watching. Every single thing that we do is guided by this principle.

The Golden Rule is stated in Luke 6:31 – “Do to others what you would have them do to you.” This is the essence of integrity.





5861 N 75 W Whiteland, IN 46184
orders@reveporter.com
317-535-1111

